

DINOSAURS COLLECTION No 1



ANDI 0101 / 8300 Sts

- 1: 1 Mid/Lt.Green
- 2: 2 Dark Green
- 3: 3 Sand
- 4: 4 Horns
- 5: 5 Brown
- 6: 1 Mid/Lt.Green



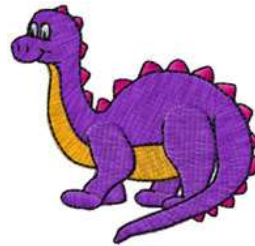
ANDI 0102 / 5400 Sts

- 1: 1 In Egg
- 2: 2 Black
- 3: 3 Green
- 4: 4 Yellow
- 5: 5 Out Egg
- 6: 3 Green
- 7: 6 White
- 8: 7 Spots
- 9: 2 Black
- 10: 1 In Egg



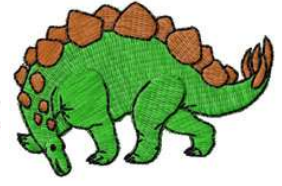
ANDI 0103 / 5500 Sts

- 1: 1 Mid Brown
- 2: 2 Inside Mouth
- 3: 1 Mid Brown
- 4: 3 Highlights
- 5: 4 Dark Brown
- 6: 5 White
- 7: 1 Mid Brown



ANDI 0104 / 5800 Sts

- 1: 1 Body
- 2: 2 Spikes
- 3: 3 Stomach
- 4: 1 Body
- 5: 4 White
- 6: 5 Black
- 7: 1 Body



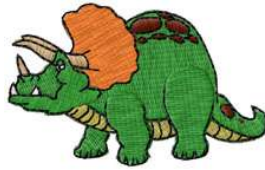
ANDI 0105 / 6000 Sts

- 1: 1 Spikes
- 2: 2 Body
- 3: 1 Spikes
- 4: 3 Outlines
- 5: 1 Spikes



ANDI 0106 / 5400 Sts

- 1: 1 Inside Mouth
- 2: 2 Green
- 3: 3 White
- 4: 4 Black
- 5: 1 Inside Mouth



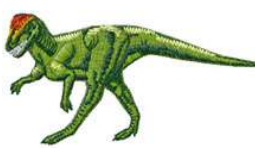
ANDI 0107 / 5500 Sts

- 1: 1 Yellow
- 2: 2 Green
- 3: 3 Red/Orange
- 4: 4 Horns
- 5: 2 Green
- 6: 5 White
- 7: 6 Spots
- 8: 7 Black
- 9: 1 Yellow



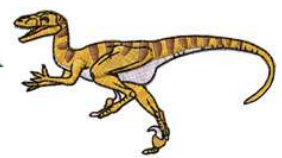
ANDI 0108 / 9400 Sts

- 1: 1 In Mouth
- 2: 2 Sand Flesh
- 3: 3 Beak
- 4: 4 Shadow
- 5: 2 Sand Flesh
- 6: 5 Highlights
- 7: 4 Shadow
- 8: 6 Eye
- 9: 1 In Mouth



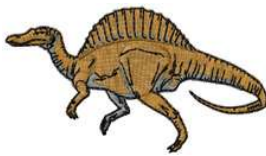
ANDI 0109 / 4900 Sts

- 1: 1 Green
- 2: 2 Yellow
- 3: 3 Dark Green
- 4: 4 Red
- 5: 5 White
- 6: 6 Highlight
- 7: 1 Green



ANDI 0110 / 5000 Sts

- 1: 1 Sand
- 2: 2 White
- 3: 3 In Mouth
- 4: 1 Sand
- 5: 3 In Mouth
- 6: 1 Sand
- 7: 4 Brown
- 8: 5 Black
- 9: 1 Sand



ANDI 0111 / 6400 Sts

- 1: 1 Grey
- 2: 2 Sand/Brown
- 3: 1 Grey
- 4: 3 Black
- 5: 1 Grey



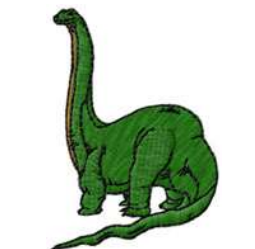
ANDI 0112 / 3200 Sts

- 1: 1 Bones



ANDI 0113 / 4400 Sts

- 1: 1 Colour



ANDI 0114 / 4400 Sts

- 1: 1 Yellow
- 2: 2 Green
- 3: 3 Black
- 4: 1 Yellow



ANDI 0115 / 6400 Sts

- 1: 1 Off Yellow
- 2: 2 Green
- 3: 3 Highlights
- 4: 4 Shadow
- 5: 1 Off Yellow



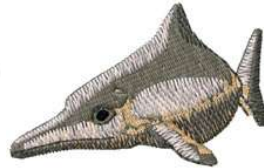
ANDI 0116 / 5400 Sts

- 1: 1 Tan
- 2: 2 Brown
- 3: 3 Yellow
- 4: 4 Shadow
- 5: 5 Eye
- 6: 1 Tan



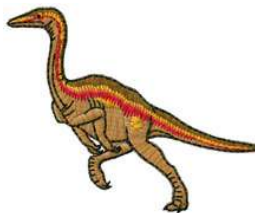
ANDI 0117 / 6500 Sts

- 1: 1 Light Blue
- 2: 2 Dark Blue
- 3: 3 Dk. Brown/Black
- 4: 4 Off Yellow(Teeth)
- 5: 5 White
- 6: 6 Black
- 7: 1 Light Blue



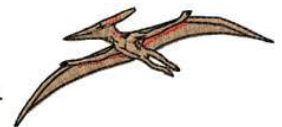
ANDI 0118 / 5500 Sts

- 1: 1 Under Body
- 2: 2 Body
- 3: 3 Highlights
- 4: 4 Shadow
- 5: 5 Eye
- 6: 1 Under Body



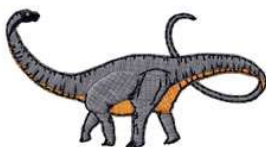
ANDI 0119 / 4100 Sts

- 1: 1 Light Flesh
- 2: 2 Dark Flesh
- 3: 3 Yellow
- 4: 4 Red
- 5: 5 Black
- 6: 1 Light Flesh



ANDI 0120 / 2600 Sts

- 1: 1 Tan
- 2: 2 Red
- 3: 3 Black
- 4: 1 Tan



ANDI 0121 / 3900 Sts

- 1: 1 Grey
- 2: 2 Sand
- 3: 1 Grey
- 4: 3 Black
- 5: 4 Eye
- 6: 1 Grey



ANDI 0122 / 5800 Sts

- 1: 1 Light Tan
- 2: 2 Tan
- 3: 3 Shadow
- 4: 4 Highlight
- 5: 1 Light Tan



ANDI 0123 / 10700 Sts

- 1: 1 In Mouth
- 2: 2 Skin
- 3: 3 White Teeth
- 4: 4 Tongue
- 5: 5 Tongue Shadow
- 6: 3 White Teeth
- 7: 6 Teeth Shadow
- 8: 1 In Mouth
- 9: 2 Skin
- 10: 7 Eye
- 11: 2 Skin
- 12: 8 Highlights
- 13: 9 Shadow
- 14: 10 Pupil
- 15: 1 In Mouth



ANDI 0124 / 5700 Sts

- 1: 1 Horns
- 2: 2 Flesh
- 3: 3 Yellow/Orange Frill
- 4: 4 Red on Frill
- 5: 1 Horns
- 6: 5 Highlights
- 7: 6 Shadow
- 8: 1 Horns



ANDI 0125 / 4600 Sts

- 1: 1 Under Body
- 2: 2 Throat (Off Orange)
- 3: 3 Body
- 4: 4 Highlights
- 5: 5 Shadows
- 6: 1 Under Body

First number is the Design Reference Number. 2nd number is the amount of stitches in the design

STOCK EMBROIDERY DESIGNS FROM THE MELLOW MOUSE COLLECTION ©

